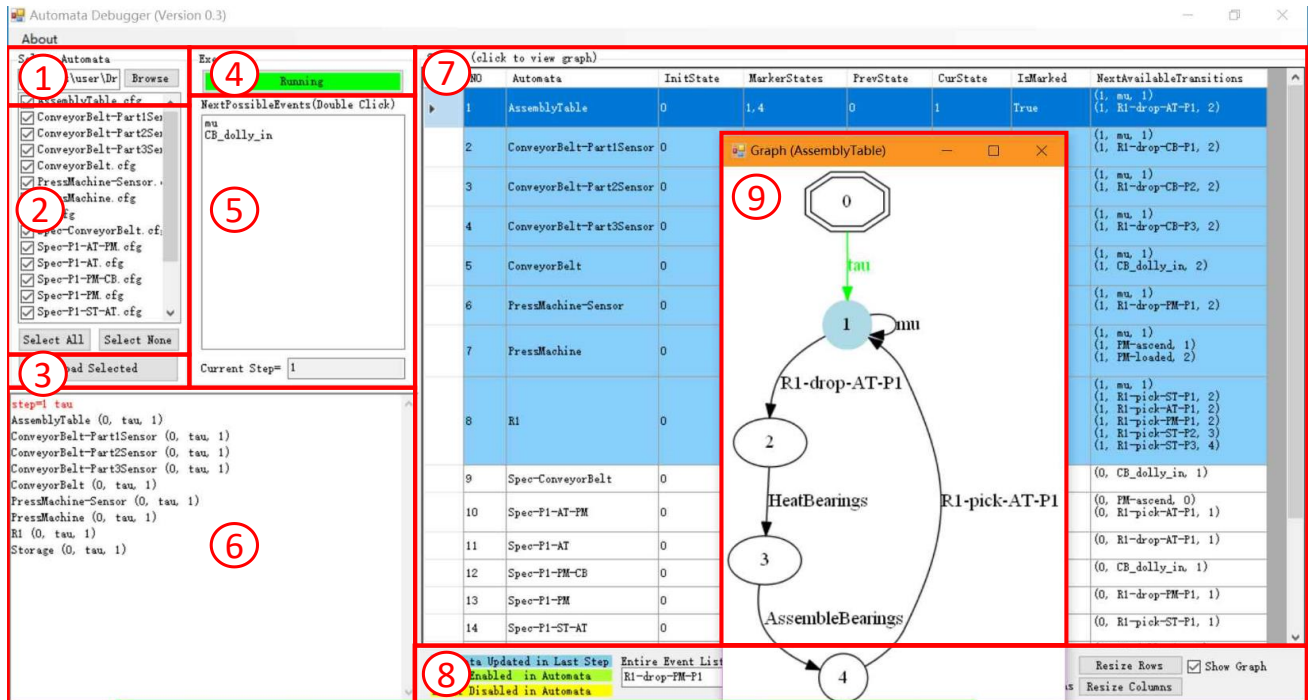


Automata Debugger (v0.3) User Manual

Last Update: 2017/11/20



Area Number	Description
1	(Step 1) Select folder where your automata files located.
2	(Step 2) Select automata files to be used for debugging. *Note: File extension(".cfg") must be in lower case.
3	(Step 3) Load selected automata files. Area 7 will display basic information of selected automata files.
4	(Step 4) Start/stop debugging.
5	(Step 5) List of events that can be triggered in the next step. Area 6 will display all triggered events. Double click to trigger the selected event. Area 6, 7 & 9 will be updated accordingly.
6	Log area. Display triggered events.
7	Automata status table. Also display available transitions based on each automata's current state.
8	Some debugging tools: <ul style="list-style-type: none"> 1) highlight automata that have the selected event (in the Entire Event List) enabled/disabled. (See Figure 2 Area 7 highlights automata that have selected event enabled/disabled) 2) Resize rows/columns of status table. 3) Show Graph. When enabled, click the cell in Automata status table will open selected automata's graph in a new window. (See Figure 3 Multiple graph)
9	Automata Graph. Click the cell in Automata status table in Area 7 to open automata graph. Multiple graphs can be opened. User can pan/zoom the graph and resize the window. Uncheck "Show Graph" in Area 8 to prevent opening graph window. *Note: Automata graphs are generated using Graphviz. Graphviz must be installed and its path must be added to the Windows Environment Variables. Follow the "Add Graphviz path to Windows Environment Variables.pdf" user guide to setup Graphviz. If Graphviz is not installed and properly configured, a warning message will pop up on start-up. (see Figure 4 Graphviz not installed warning message on start-up)

Automata Debugger (v0.3) User Manual

Last Update: 2017/11/20

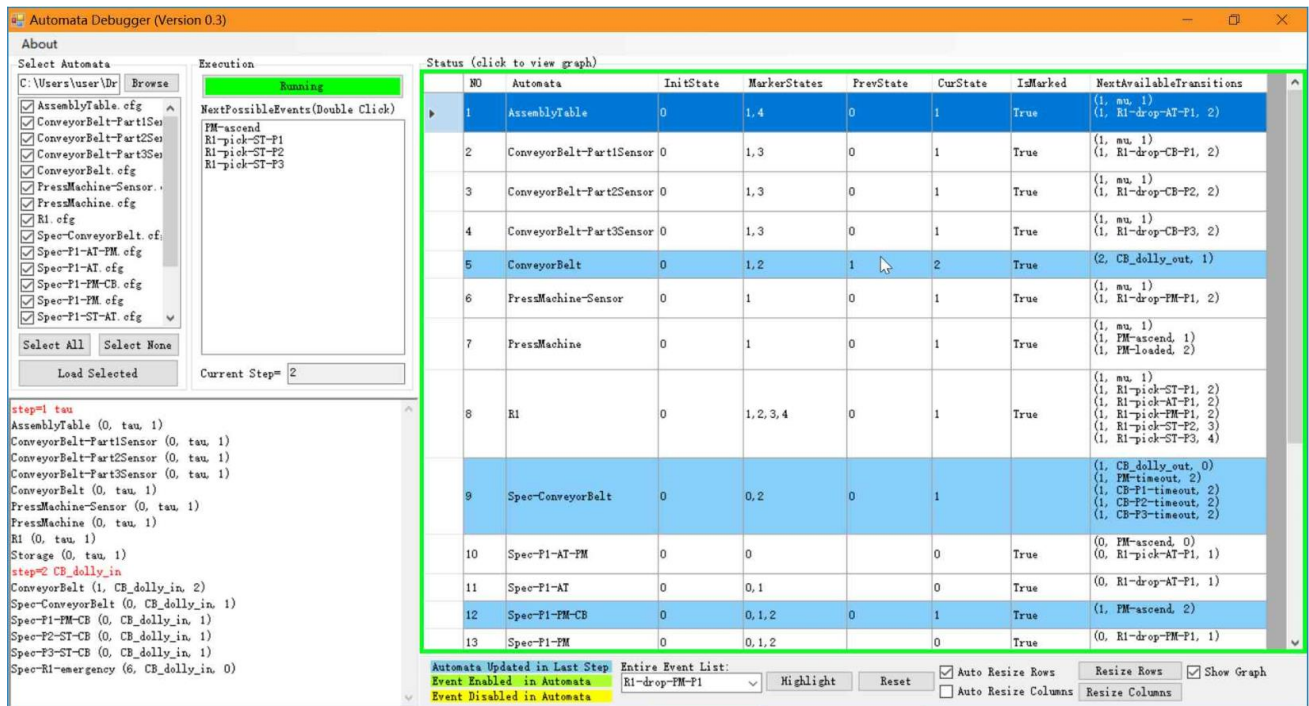


Figure 1 Automata updated in last step are highlighted in blue

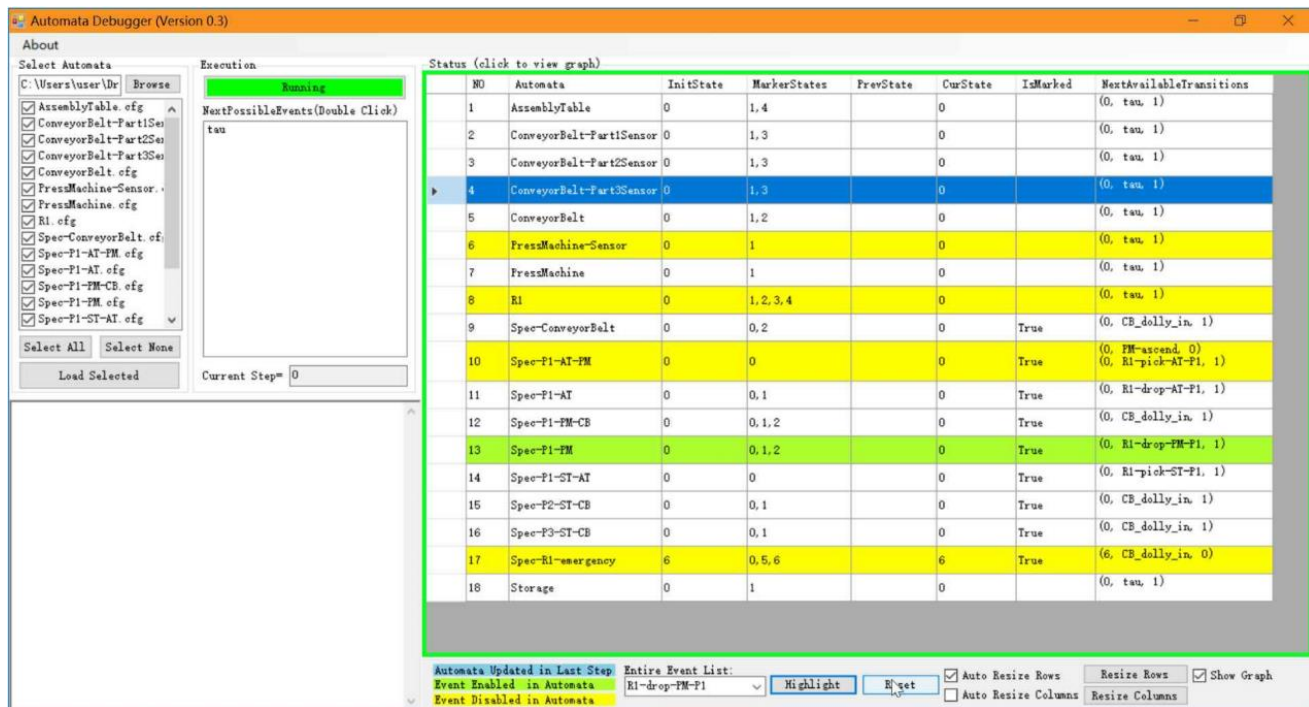


Figure 2 Area 7 highlights automata that have selected event enabled/disabled

Automata Debugger (v0.3) User Manual

Last Update: 2017/11/20

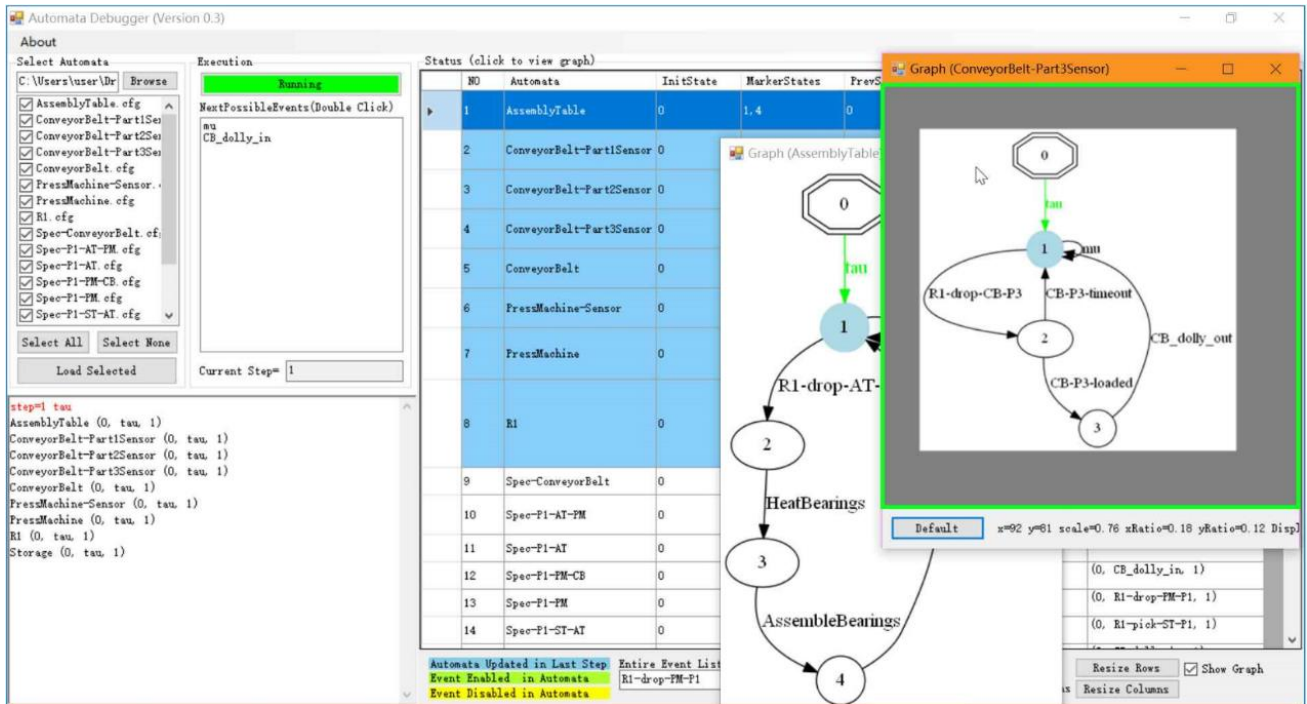


Figure 3 Multiple graph window can be opened

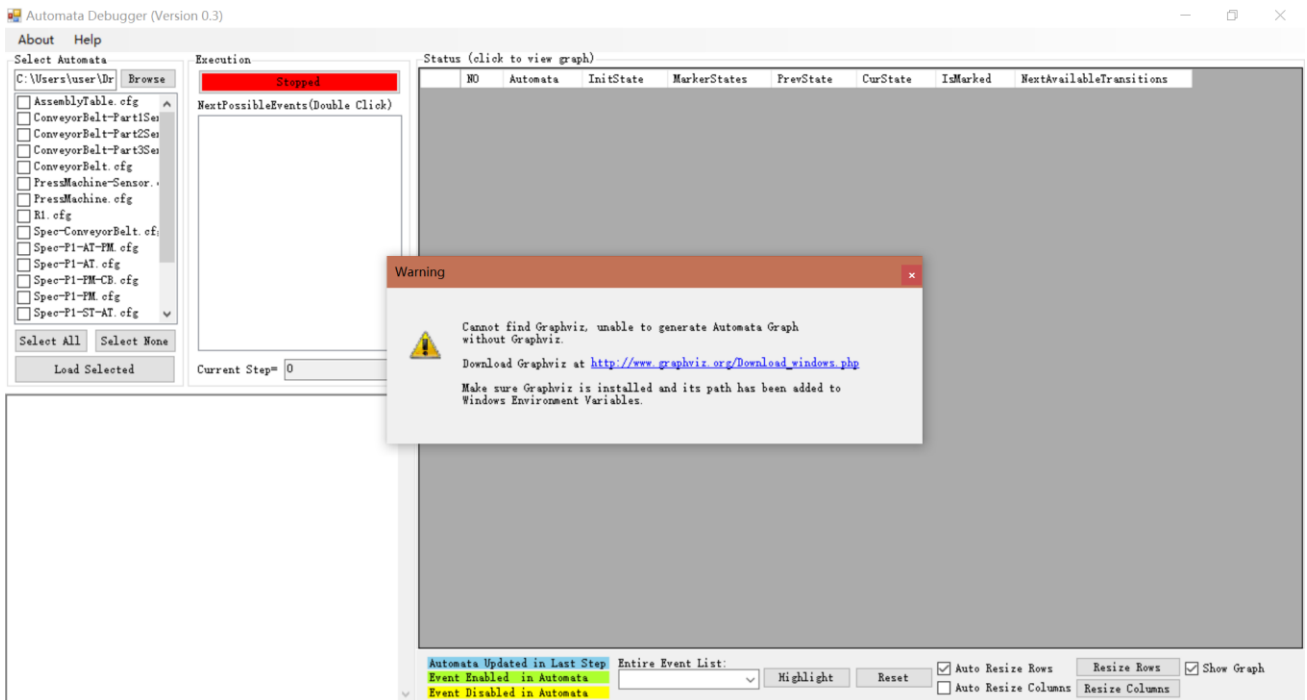
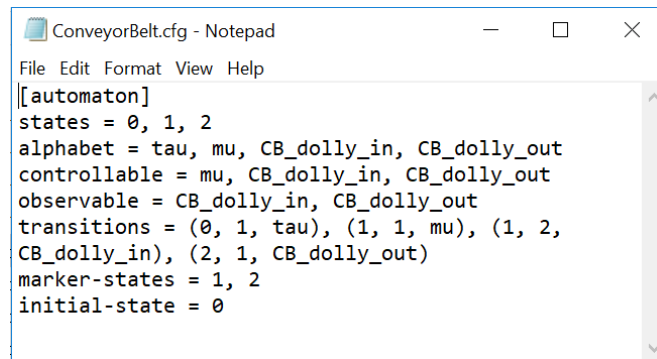


Figure 4 Graphviz not installed warning message on start-up

Automata Debugger (v0.3) User Manual
Last Update: 2017/11/20



```
ConveyorBelt.cfg - Notepad
File Edit Format View Help
[[automaton]
states = 0, 1, 2
alphabet = tau, mu, CB_dolly_in, CB_dolly_out
controllable = mu, CB_dolly_in, CB_dolly_out
observable = CB_dolly_in, CB_dolly_out
transitions = (0, 1, tau), (1, 1, mu), (1, 2,
CB_dolly_in), (2, 1, CB_dolly_out)
marker-states = 1, 2
initial-state = 0
```

Figure 5 Example Automata file (.cfg)